



Landscape Master Plan Vision

The Castle Hill Village precinct draws on the local urban village character and natural landscape beauty to create a public realm design that is sensitive, peaceful and responsive to the surrounding environment and community needs. Inspired by Christian witness values, the landscape master plan aims to create a series of spaces and places that provide a variety of passive and active opportunities for residents and their families to use and enjoy. These places also encourage social community through gardening, barbecue and bocce. The landscape master plan provides spaces for contemplation, prayer and reflection. Central to these spaces and places is a green spine that creates a cohesive and integrated public realm.

Principles

Six landscape design principles are applied to the Castle Hill Village Master Plan providing a strong framework for the future design of the project.

1- Green Central Spine:

'Empowerment of the spirit by supporting healing, contemplation and stimulating hope'. The landscape theme of the Central Spine provides passive recreation and reflection, and active recreation that empowers the spirit. The 'Green Spine' is reinforced by the central lagoon and provides pedestrian and visual connectivity between activity nodes. This central path system organises primary and secondary nodes establishing a legible movement system through spaces of varying scale and character. The main pathway provides full DDA compliant access reinforced through the following elements:

- **Planting**
The tree canopy structure accents open and enclosed spaces throughout the Spine.
- **Landscape structures**
A consistent architectural design language through a series of follies or architectural structures will define key nodes, refuge and gathering areas along the Spine.
- **Material and furniture**
The Central Spine is reinforced by using identifiable materials and finishes that distinguish the pathway from the surrounding paths. Sculptural elements and lighting reinforce moments of Christian values along the path.

2- Village Community:

The site's predominant village character provides a sense of place and belonging. Private residential frontages with controlled visibility from public footpaths provide passive surveillance. This blurred perception of private/public space allows residents to extend their sense of ownership to the public domain reinforcing a sense of place. The overall village character is enhanced through the following key elements:

- **Semi-private front yard**
Controlled visibility between private residential and public spaces.
- **Shared facilities**
Shared amenities include communal tables, community gardens, barbecues and recreation facilities
- **Proximity to amenities**
Equitable access to amenities close to residential and activity areas.

3- Hierarchy of Nodes

Places of respite, that encourage the value of Christian witness through contemplation, adopt a diverse spatial typology to cater for private and public social engagement. The three main open space types are:

- **Arrival**
Located on the major entry point of the site, this space marks the address with artistic/sculptural elements and feature planters.
- **Primary**
Primary spaces anchor the northern and the southern precincts with connectivity to the village centre.
- **Secondary**
Within the central precinct secondary nodes provide activity spaces themed for active and passive recreation for diverse community needs.

4- Celebrating Water

The lagoon is an activated signature element, promoting engagement with the water edge and surface. A key objective is substantial water quality improvement through water aeration, and peak stormwater management. This includes water capture and reuse for landscape irrigation. The water experience is reinforced through:

- **Activating the lagoon edge**
Redefining the edge of the lagoon to allow for improved accessibility to water edge
- **Introducing an additional secondary pond**
Increased detention capacity for better water treatment and general engagement.
- **WSUD**
Integration of water filtration within the public domain, including roads and open spaces.
- **Water Sculpture**
Includes fountains and other sculptural elements.

5-Optimizing Accessibility

The importance of optimizing DDA accessibility throughout the site is critical. The design provides for DDA compliance wherever possible, including all primary and secondary access paths. Rest zones (landscape nooks /pause points) are also provided. Pavement materiality has been considered in terms of accessibility, slip resistance and walkability and to highlight the footpath hierarchy. All access paths adopt maximum gradients of 1:21 to minimise the need for use of handrails.

6-Enhancing Landscape Views

Landscape views across the site are retained and enhanced in order to reinforce landscape character while optimising surveillance and Crime Prevention Through Environmental Design (CPTED) principles.

A number of primary views are recognised, with consideration of landscape views across Tom-Thumb lagoon and internal open spaces. The arrival gateway view from the Old Northern road running east into the site and view corridors north east across the site from the southern precinct are celebrated. The view along the east west pedestrian link terminating at the Lober Square precinct is also recognised and enhanced.

The following objectives are considered; Strategic clearing of unprotected trees and understorey vegetation to enhance views. New feature trees, lighting, sculptural or landscape elements to reinforce key views and foci. Architectural follies within the landscape to create focal and termination points.

AECOM

PROJECT

KILVINTON & DOROTHY
MOWLL COURT
RENEWAL

ADDRESS

KILVINTON VILLAGE
417 OLD NORTHERN RD,
CASTLE HILL NSW

CLIENT

ANGLICARE
RETIREMENT VILLAGES
(DIOCESE OF SYDNEY)

CONSULTANT

AECOM Australia Pty Ltd
A.B.N 20 093 846 925
www.aecom.com

REGISTRATION

PROJECT MANAGEMENT INITIALS

R.KHAW	R.HIPOLITO	B.NEWEILL
DESIGNER	CHECKED	APPROVED

ISSUE/REVISION

NO	DATE	DESCRIPTION
C	13.02.19	FOR APPROVAL
B	30.01.19	FOR APPROVAL
A	21.12.18	FOR REVIEW
1/R	DATE	DESCRIPTION

KEY PLAN



PROJECT NUMBER

60538574

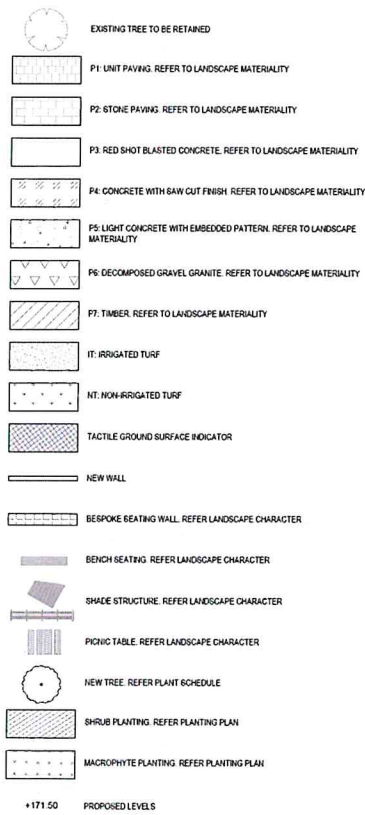
SHEET TITLE

LANDSCAPE MASTER PLAN
AND DESIGN VISION

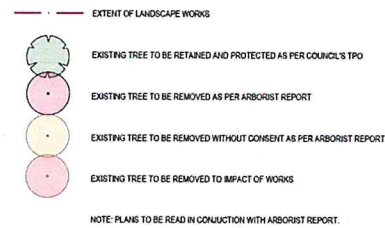
SHEET NUMBER

60538574-DA-L0101 [REV C]

LANDSCAPE LEGEND



TREE RETENTION LEGEND



PLANTING LEGEND



PLANT SCHEDULE

BOTANICAL NAME	COMMON NAME	POT SIZE	MATURE HEIGHT	MATURE SPREAD
Native Trees				
<i>Allocasuarina torulosa</i>	Forest Oak		20m	10m
<i>Corymbia eximia</i>	Yellow Bloodwood		20m	15m
<i>Corymbia gumifera</i>	Red Bloodwood		20m	10m
<i>Eucalyptus racemosa</i>	Strappy Gum		20m	15m
<i>Elaeocarpus reticulatus</i>	Blueberry Ash		6m	4m
<i>Glochidion ferdinandi</i>	Cheese Tree		15m	8m
<i>Tristanopsis laurina</i>	Water Gum		15m	6m
Shrubs				
Tall/Large Shrubs				
<i>Correa alba</i>	White Correa		1.5m	1m
<i>Epacris pulchella</i>	NSW Coral Heath		1.5m	1m
<i>Ozothamnus diosmifolius</i>	Everlasting		2m	1m
<i>Pinhelea liliifolia</i>	Rice Flower		1.5m	1m
<i>Westringia frutescens</i>	Native Rosemary		2m	5m
Medium/Strappy Shrubs				
<i>Dianella revoluta</i>	Blue Flax Lily		1m	1.5m
<i>Dianella tasmanica</i>	Flax Lily		0.6m	0.6m
<i>Indigofera australis</i>	Australian Indigo		1.2m	1.2m
<i>Juncus usitatus</i>	Common Rush		1.1m	0.4m
<i>Lomandra longifolia</i>	Mat Rush		1m	1m
<i>Lomandra "Tanika"</i>	Mat Rush		0.6m	0.6m
<i>Poa labillardieri</i>	Tussock Grass		1.2m	1m
Groundcover Shrubs				
<i>Grevillea juniperina</i>	Gold Cluster Grevillea		0.3m	1m
<i>Myoporum parvifolium</i>	Creeping Boobiala		0.3m	0.8m
<i>Pratia purpurascens</i>	White Root		0.15m	0.4m
<i>Westringia "Low Horizon"</i>	Coastal Rosemary		0.3m	0.7m
Exotic Trees				
<i>Fraxinus angustifolia</i>	Claret Ash		12m	9m
<i>Ginkgo biloba</i>	Maidenhair Tree		12m	5m
<i>Lagerstroemia indica</i>	Crape Myrtle		8m	6m
<i>Platanus x Acerifolia</i>	London Plane		14m	10m
<i>Prunus cerasifera</i>	Ornamental Pear		6m	3m
<i>Pyrus calleryana</i>	Ornamental Pear		11m	3m
<i>Ulmus parvifolia</i>	Chinese Elm		10m	11m
<i>Zelkova serrata</i>	Green Vase		14m	10m
Shrubs				
Tall/Large Shrubs				
<i>Echium fastuosum</i>	Duxfield Blue		1.5m	1.5m
<i>Loropetalum chinense rubrum</i>	China Pink		2m	1.5m
<i>Magnolia grandiflora</i>	Teddy Bear Magnolia		4m	3m
<i>Xylocopa sericea</i>	Shiny Xylocopa		2.4m	2m
Medium/Strappy Shrubs				
<i>Artropodium cirratum</i>	Te Puna NZ Rock Lily		0.4m	0.5m
<i>Dietes grandiflora</i>	Wild Iris		1.2m	1.2m
<i>Euphorbia tirucalli</i>	Firesticks		0.5m	0.4m
<i>Liriodendron "Isabella"</i>	Isabella		0.4m	2m
<i>Loropetalum chinense</i>	Purple Pixie		0.5m	1.2m
<i>Rhaphiolepis indica</i>	Oriental Pear		0.8m	1m
Groundcover Shrubs				
<i>Grevillea juniperina</i>	Gold Cluster		0.3m	1m
<i>Helichrysum petiolare</i>	Licorice Plant		0.4m	1.5m
<i>Stachys byzantina</i>	Lamb's Ears		0.3m	1m
Lake				
Trees				
<i>Angophora floribunda</i>	Rough barked Apple		22m	10m
<i>Casuarina glauca</i>	Swamp Oak		15-20m	10-15m
<i>Eucalyptus piperita</i>	Sydney Peppermint		20m	
<i>Eucalyptus punctata</i>	Grey Gum		10-25m	10m
<i>Eucalyptus sideroxylon</i>	Red Ironbark		18m	12m
<i>Molauca styphalioides</i>	Prickly-leaved Paperbark		6.8m	3.5m
Terrestrial Planting (+0.5m and above)				
<i>Acacia implexa</i>	Hickory Wattle		6-Aug	4m
<i>Dichelachne micrantha</i>	Short Hair Plume Grass		0.3m	1.1m
<i>Indigofera australis</i>	Australian Indigo		1.2m	1.2m
<i>Poa labillardieri</i>	Tussock Grass		1m	1m
<i>Themeda australis</i>	Kangaroo Grass		1.5m	0.5m
Reeds/Waters edge				
<i>Carex appressa</i>	Saw Sedge		0.5-1.2m	0.5-1m
<i>Ficinia nodosa</i>	Knobby Club Rush		1m	0.8m
<i>Juncus usitatus</i>	Common Rush		1m	0
Open Water				
<i>Phragmites australis</i>	Common Reed		1m	3m

AECOM

PROJECT

KILVINTON & DOROTHY
MOWLL COURT
RENEWAL

ADDRESS

KILVINTON VILLAGE
417 OLD NORTHERN RD,
CASTLE HILL NSW

CLIENT

ANGLICARE
RETIREMENT VILLAGES
(DIOCESE OF SYDNEY)

CONSULTANT

AECOM Australia Pty Ltd
A.B.N 20 093 846 925
www.aecom.com

REGISTRATION

PROJECT MANAGEMENT INITIALS

R.HIPOLITO	B.NEWEILL	B.NEWEILL
DESIGNER	CHECKED	APPROVED

ISSUE/REVISION

NO	DATE	DESCRIPTION
C	13.02.19	FOR APPROVAL
B	30.01.19	FOR APPROVAL
A	21.12.18	FOR REVIEW
1/R		

KEY PLAN

PROJECT NUMBER

60538574

SHEET TITLE

LANDSCAPE LEGEND,
NOTES AND SCHEDULES

SHEET NUMBER

DA-0000-L-0102

LANDSCAPE CHARACTER



A Timber Bench Seating with Coated Black Arm Rests and Frame



B Seating Walls with Integrated Bespoke Timber



C Steel Shade Structures with Picnic Tables



D Timber Slatted Waste Enclosures



E Irrigated Amphitheater and Open Turf Area



F Active Lawn Bowls Area



G Community Gardens to Residential Areas



H Residential Gardens

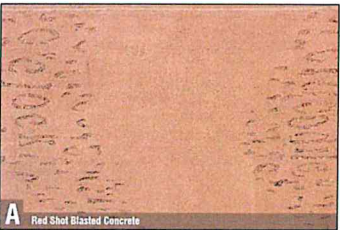


I Urban Open Plaza Areas



J Active Exercise Hooks

LANDSCAPE MATERIALITY



A Red Shot Blasted Concrete



B Concrete with Saw Cut Finish



C Light Concrete with Embedded Patterns



D Unit Paving



E Stone Set Paving



F Decomposed Gravel Granite



G Decorative Gravel



H Timber Boardwalk



I Raised Concrete Planters



J Turf

AECOM

PROJECT

KILVINTON & DOROTHY
MOWLL COURT
RENEWAL

ADDRESS

KILVINTON VILLAGE
417 OLD NORTHERN RD,
CASTLE HILL NSW

CLIENT

ANGLICARE
RETIREMENT VILLAGES
(DIOCESE OF SYDNEY)

CONSULTANT

AECOM Australia Pty Ltd
A.B.N 20 093 846 925
www.aecom.com

REGISTRATION

PROJECT MANAGEMENT INITIALS

R.HIPOLITO	B.NEWELL	B.NEWELL
DESIGNER	CHECKED	APPROVED

ISSUE/REVISION

NO	DATE	DESCRIPTION
C	13.02.19	FOR APPROVAL
B	30.01.19	FOR APPROVAL
A	21.12.18	FOR REVIEW

KEY PLAN

PROJECT NUMBER

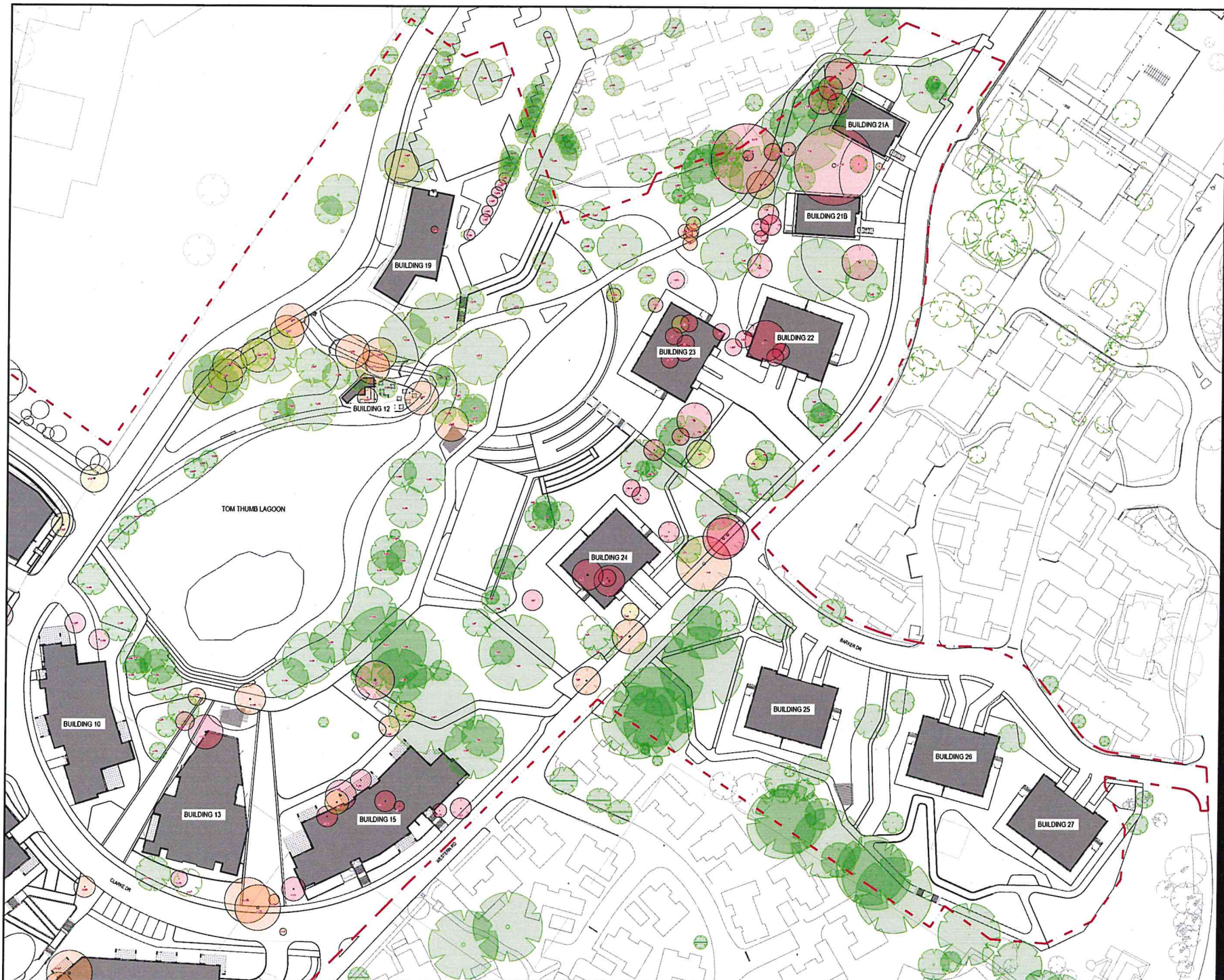
60538574

SHEET TITLE

LANDSCAPE CHARACTER
AND MATERIALS

SHEET NUMBER

DA-0000-L-0103

**AECOM**

PROJECT

KILVINTON & DOROTHY MOWLL COURT RENEWAL

ADDRESS

KILVINTON VILLAGE
417 OLD NORTHERN RD,
CASTLE HILL NSW

CLIENT

**ANGLICARE
RETIREMENT VILLAGES
(DIOCESE OF SYDNEY)**

CONSULTANT

AECOM Australia Pty Ltd
A.B.N 20 093 846 925
www.aecom.com

REGISTRATION

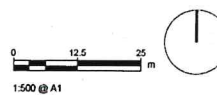
PROJECT MANAGEMENT INITIALS

R HIPOLITO	B NEWELL	B NEWELL
DESIGNER	CHECKED	APPROVED

ISSUE/REVISION

C	13.02.19	FOR APPROVAL
B	30.01.19	FOR APPROVAL
A	21.12.16	FOR REVIEW
VR	DATE	DESCRIPTION

KEY PLAN



PROJECT NUMBER

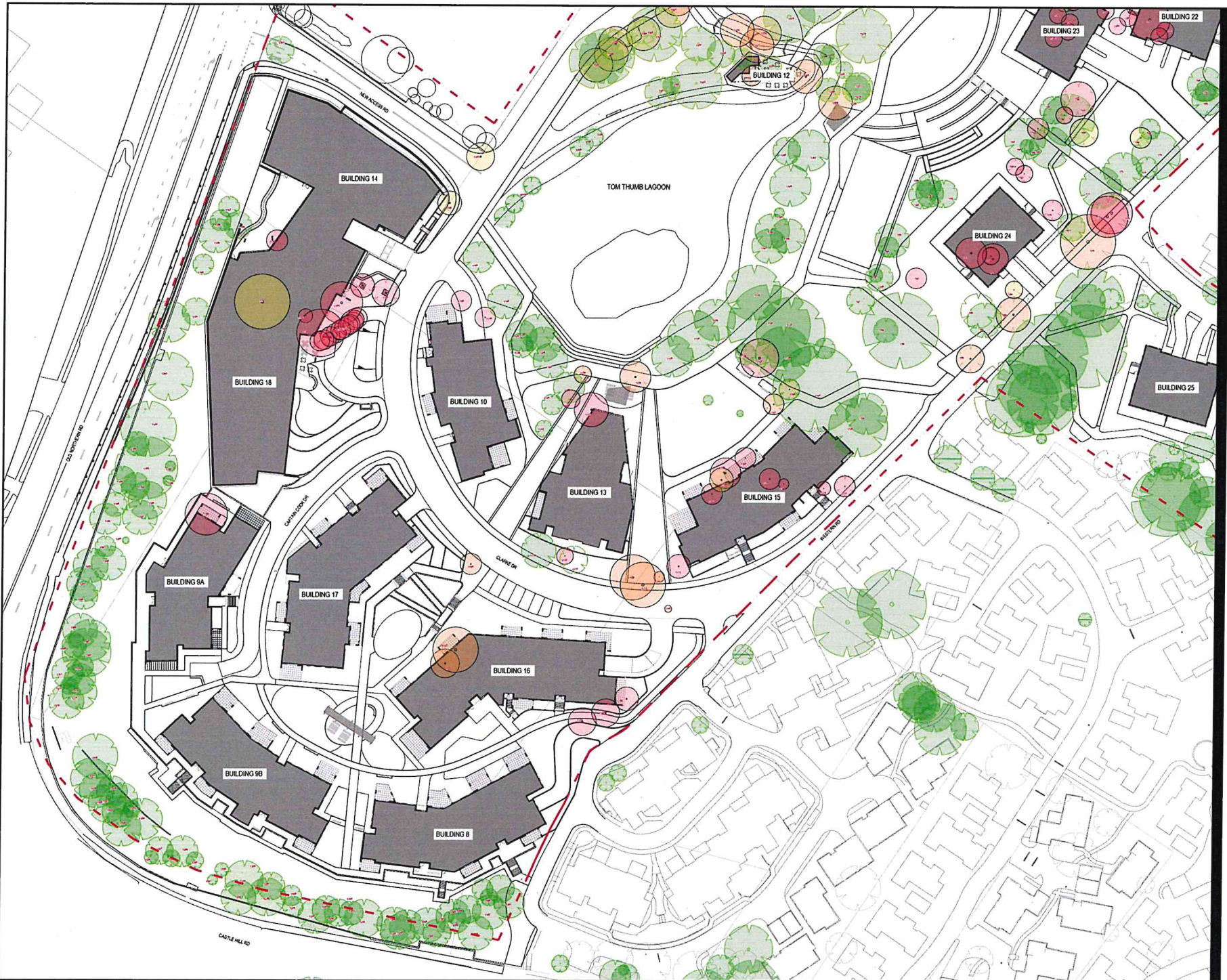
60538574

SHEET TITLE

TREE RETENTION PLAN
 SHEET 1 OF 2

SHEET NUMBER

DA-0000-L-0200



AECOM

PROJECT

KILVINTON & DOROTHY
 MOWLL COURT
 RENEWAL

ADDRESS

KILVINTON VILLAGE
 417 OLD NORTHERN RD,
 CASTLE HILL NSW

CLIENT

ANGLICARE
 RETIREMENT VILLAGES
 (DIOCESE OF SYDNEY)

CONSULTANT

AECOM Australia Pty Ltd
 A.B.N 20 093 840 925
 www.aecom.com

REGISTRATION

PROJECT MANAGEMENT INITIALS

R.HIPOLITO	B.NEWELL	B.NEWELL
DESIGNER	CHECKED	APPROVED

ISSUE/REVISION

NO	DATE	DESCRIPTION
C	13.02.19	FOR APPROVAL
B	20.01.19	FOR APPROVAL
A	21.12.18	FOR REVIEW
VR	DATE	DESCRIPTION

KEY PLAN



PROJECT NUMBER

60538574

SHEET TITLE

TREE RETENTION PLAN
 SHEET 2 OF 2

SHEET NUMBER

DA-0000-L-0201

**AECOM**

PROJECT

KILVINTON & DOROTHY
MOWLL COURT
RENEWAL

ADDRESS

KILVINTON VILLAGE
417 OLD NORTHERN RD,
CASTLE HILL NSW

CLIENT

**ANGLICARE
RETIREMENT VILLAGES
(DIOCESE OF SYDNEY)**

CONSULTANT

AECOM Australia Pty Ltd
A.B.N 20 093 846 925
www.aecom.com

REGISTRATION

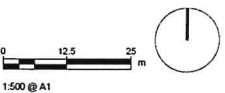
PROJECT MANAGEMENT INITIALS

R HIPOLITO	B NEWELL	B NEWELL
DESIGNER	CHECKED	APPROVED

ISSUE/REVISION

C	13.02.19	FOR APPROVAL
B	30.01.19	FOR APPROVAL
A	21.12.18	FOR REVIEW
IR	DATE	DESCRIPTION

KEY PLAN



PROJECT NUMBER

60538574

SHEET TITLE

LANDSCAPE PLAN
SHEET 1 OF 3

SHEET NUMBER

DA-0000-L-0300



AECOM

PROJECT
KILVINTON & DOROTHY
MOWLL COURT
RENEWAL

ADDRESS
KILVINTON VILLAGE
417 OLD NORTHERN RD,
CASTLE HILL NSW

CLIENT
ANGLICARE
RETIREMENT VILLAGES
(DIOCESE OF SYDNEY)

CONSULTANT
AECOM Australia Pty Ltd
A.B.N. 20 093 846 925
www.aecom.com

REGISTRATION

PROJECT MANAGEMENT INITIALS

R HIPOLITO	B NEWELL	B NEWELL
DESIGNER	CHECKED	APPROVED

ISSUE/REVISION

VR	DATE	DESCRIPTION
C	13.02.19	FOR APPROVAL
B	30.01.19	FOR APPROVAL
A	21.12.18	FOR REVIEW

KEY PLAN



PROJECT NUMBER
60538574
SHEET TITLE
LANDSCAPE PLAN
SHEET 2 OF 3

SHEET NUMBER
DA-0000-L-0301



AECOM

PROJECT

KILVINTON & DOROTHY
MOWLL COURT
RENEWAL

ADDRESS

KILVINTON VILLAGE
417 OLD NORTHERN RD,
CASTLE HILL NSW

CLIENT

ANGLICARE
RETIREMENT VILLAGES
(DIOCESE OF SYDNEY)

CONSULTANT

AECOM Australia Pty Ltd
A.B.N 20 093 846 925
www.aecom.com

REGISTRATION

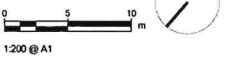
PROJECT MANAGEMENT INITIALS

R. HIPOLITO	B. NEWELL	B. NEWELL
DESIGNER	CHECKED	APPROVED

ISSUE/REVISION

VR	DATE	DESCRIPTION
C	13.02.19	FOR APPROVAL
B	30.01.19	FOR APPROVAL
A	21.12.18	FOR REVIEW

KEY PLAN



PROJECT NUMBER

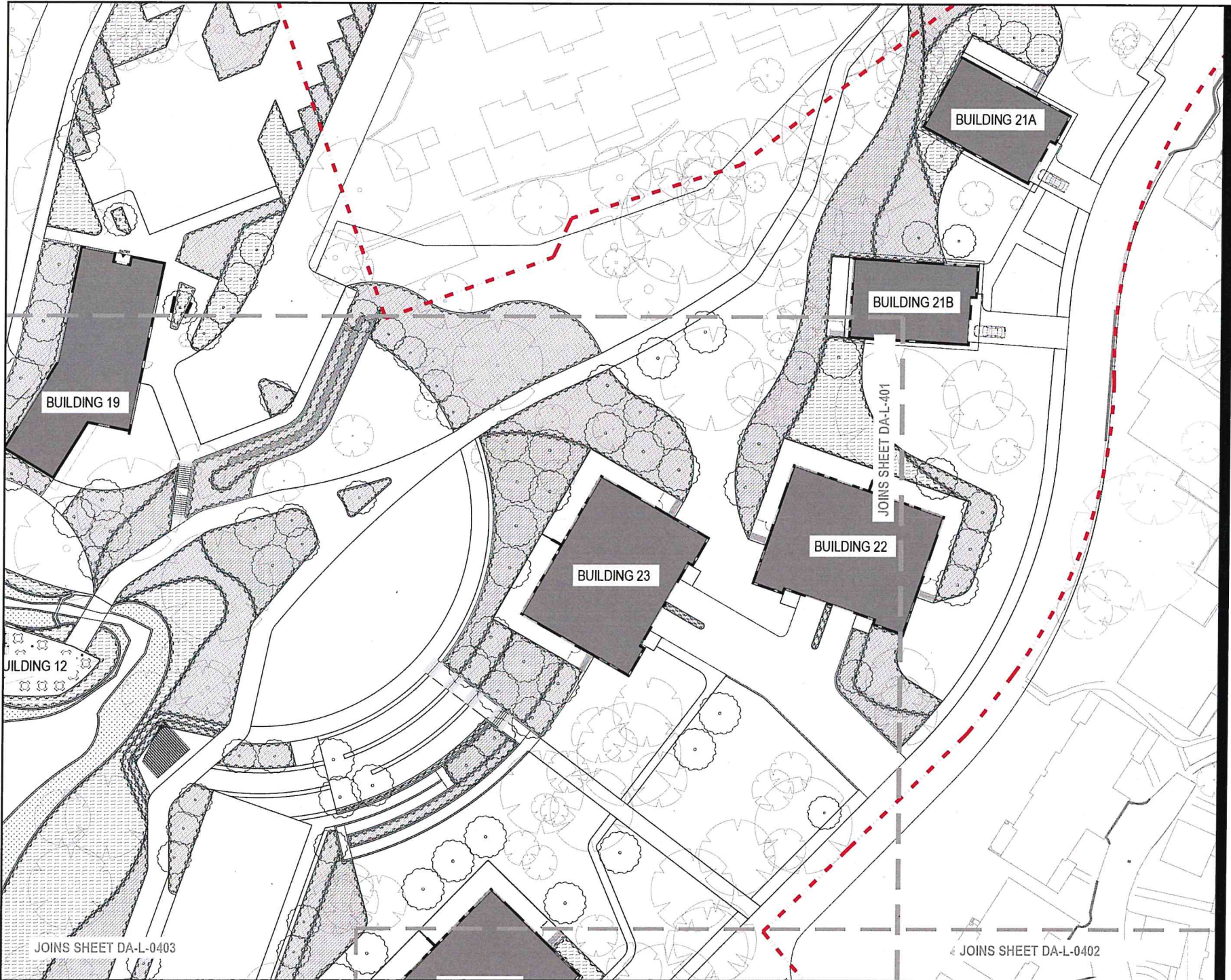
60538574

SHEET TITLE

LANDSCAPE PLAN - LEVEL 1
SHEET 3 OF 3

SHEET NUMBER

DA-0000-L-0302



AECOM

PROJECT

KILVINTON & DOROTHY
MOWLL COURT
RENEWAL

ADDRESS

KILVINTON VILLAGE
417 OLD NORTHERN RD,
CASTLE HILL NSW

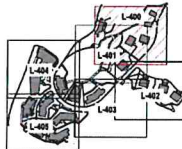
CLIENT

ANGLICARE
RETIREMENT VILLAGES
(DIOCESE OF SYDNEY)

CONSULTANT

AECOM Australia Pty Ltd
A B N 20 053 846 925
www.aecom.com

REGISTRATION



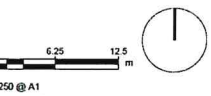
PROJECT MANAGEMENT INITIALS

R.KHAW	R.HIPOLITO	S.NEVELL
DESIGNER	CHECKED	APPROVED

ISSUE/REVISION

C	13.02.19	FOR APPROVAL
B	30.01.19	FOR APPROVAL
A	21.12.18	FOR REVIEW
VR	DATE	DESCRIPTION

KEY PLAN



PROJECT NUMBER

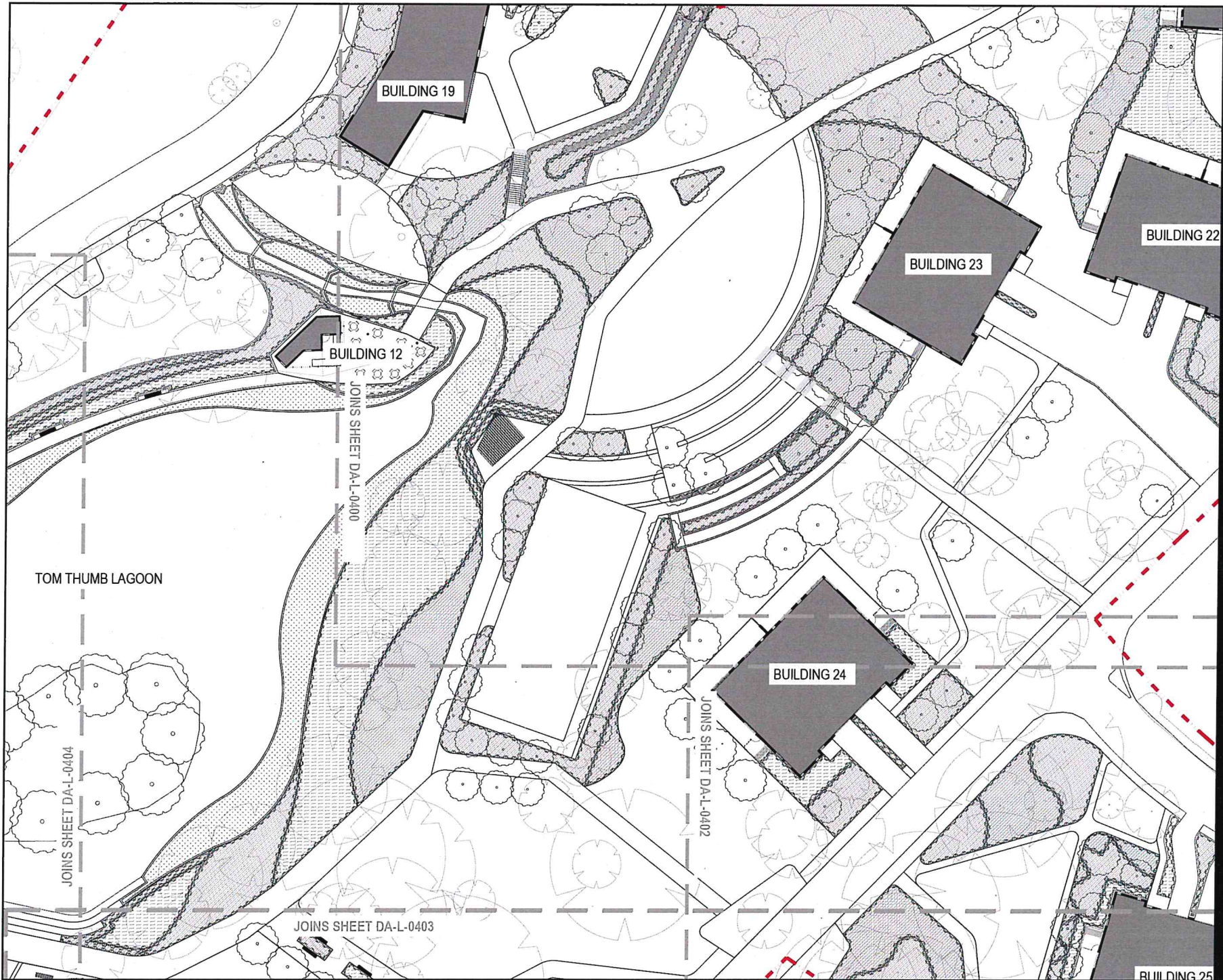
60538574

SHEET TITLE

PLANTING PLAN
SHEET 1 OF 6

SHEET NUMBER

DA-0000-L-0400



AECOM

PROJECT

KILVINTON & DOROTHY
MOWLL COURT
RENEWAL

ADDRESS

KILVINTON VILLAGE
417 OLD NORTHERN RD,
CASTLE HILL NSW

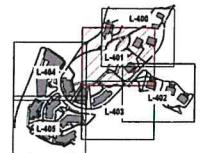
CLIENT

ANGLICARE
RETIREMENT VILLAGES
(DIOCESE OF SYDNEY)

CONSULTANT

AECOM Australia Pty Ltd
A.B.N 20 093 846 925
www.aecom.com

REGISTRATION



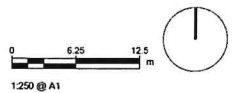
PROJECT MANAGEMENT INITIALS

R.KHAW	R.HIPOLITO	B.NEVELL
DESIGNER	CHECKED	APPROVED

ISSUE/REVISION

NO	DATE	DESCRIPTION
C	13.02.19	FOR APPROVAL
B	30.01.19	FOR APPROVAL
A	21.12.18	FOR REVIEW
VR	DATE	DESCRIPTION

KEY PLAN



PROJECT NUMBER

60538574

SHEET TITLE

PLANTING PLAN
SHEET 2 OF 6

SHEET NUMBER

DA-0000-L-0401



AECOM

PROJECT

KILVINTON & DOROTHY
MOWLL COURT
RENEWAL

ADDRESS

KILVINTON VILLAGE
417 OLD NORTHERN RD,
CASTLE HILL NSW

CLIENT

ANGLICARE
RETIREMENT VILLAGES
(DIOCESE OF SYDNEY)

CONSULTANT

AECOM Australia Pty Ltd
A.B.N 20 093 846 925
www.aecom.com

REGISTRATION



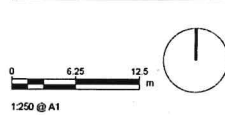
PROJECT MANAGEMENT INITIALS

R.KHAW	R.HIPOLITO	B.NEVELL
DESIGNER	CHECKED	APPROVED

ISSUE/REVISION

IR	DATE	DESCRIPTION
C	13.02.19	FOR APPROVAL
B	30.01.19	FOR APPROVAL
A	21.12.18	FOR REVIEW

KEY PLAN



PROJECT NUMBER

60538574

SHEET TITLE

PLANTING PLAN
SHEET 3 OF 6

SHEET NUMBER

DA-0000-L-0402

**AECOM**

PROJECT

KILVINTON & DOROTHY MOWLL COURT RENEWAL

ADDRESS

KILVINTON VILLAGE
417 OLD NORTHERN RD,
CASTLE HILL NSW

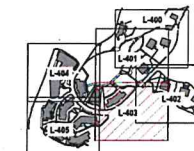
CLIENT

ANGLICARE
RETIREMENT VILLAGES
(DIOCESE OF SYDNEY)

CONSULTANT

AECOM Australia Pty Ltd
A.B.N 20 093 846 925
www.aecom.com

REGISTRATION



PROJECT MANAGEMENT INITIALS

R.KHAW	R.HIPOLITO	B.NEWELL
DESIGNER	CHECKED	APPROVED

ISSUE/REVISION

C	13.02.19	FOR APPROVAL
B	30.01.19	FOR APPROVAL
A	21.12.18	FOR REVIEW
IR	DATE	DESCRIPTION

KEY PLAN



PROJECT NUMBER

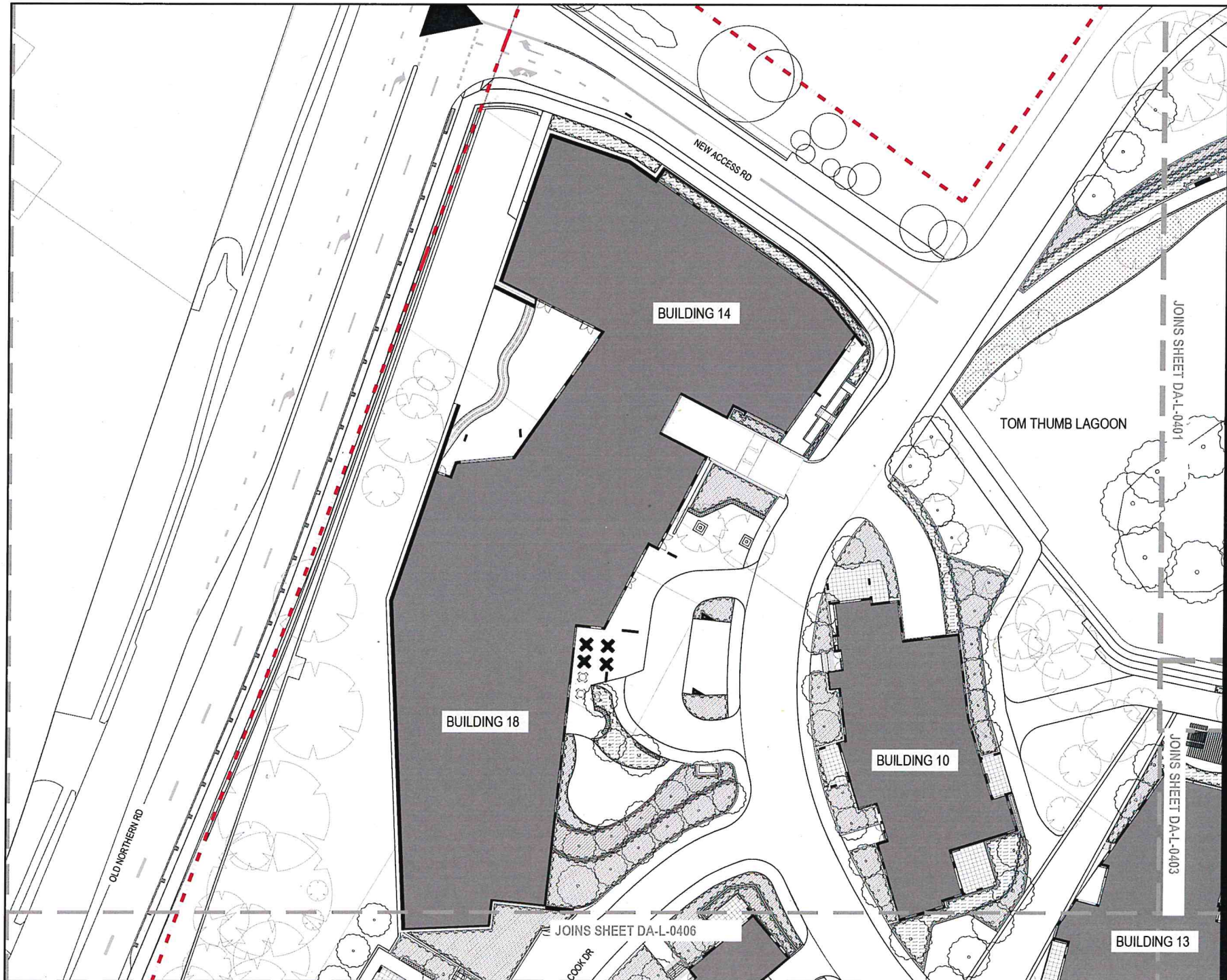
60538574

SHEET TITLE

PLANTING PLAN
SHEET 4 OF 6

SHEET NUMBER

DA-0000-L-0403



AECOM

PROJECT

KILVINTON & DOROTHY
MOWLL COURT
RENEWAL

ADDRESS

KILVINTON VILLAGE
417 OLD NORTHERN RD,
CASTLE HILL NSW

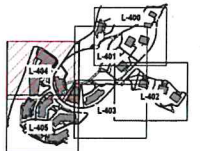
CLIENT

ANGLICARE
RETIREMENT VILLAGES
(DIOCESE OF SYDNEY)

CONSULTANT

AECOM Australia Pty Ltd
A.B.N 20 093 846 925
www.aecom.com

REGISTRATION



PROJECT MANAGEMENT INITIALS

R KHAW	R HIPOLITO	B NEWELL
DESIGNER	CHECKED	APPROVED

ISSUE/REVISION

VR	DATE	DESCRIPTION
C	13.02.19	FOR APPROVAL
B	30.01.19	FOR APPROVAL
A	21.12.18	FOR REVIEW

KEY PLAN



PROJECT NUMBER

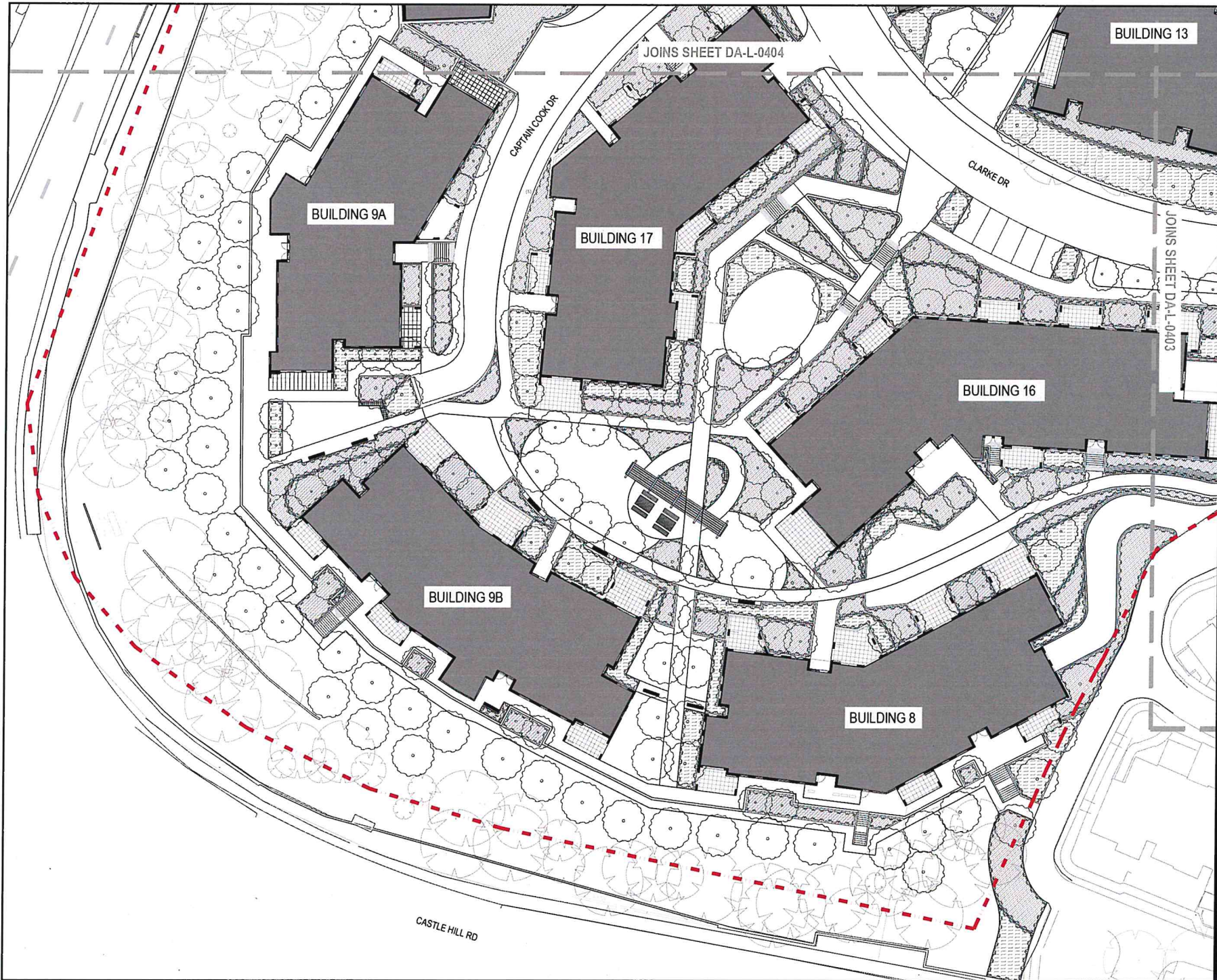
60538574

SHEET TITLE

PLANTING PLAN
SHEET 5 OF 6

SHEET NUMBER

DA-0000-L-0404



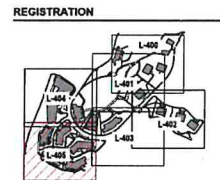
AECOM

PROJECT
 KILVINTON & DOROTHY
 MOWLL COURT
 RENEWAL

ADDRESS
 KILVINTON VILLAGE
 417 OLD NORTHERN RD,
 CASTLE HILL NSW

CLIENT
 ANGLICARE
 RETIREMENT VILLAGES
 (DIOCESE OF SYDNEY)

CONSULTANT
 AECOM Australia Pty Ltd
 A.B.N 20 093 846 925
 www.aecom.com



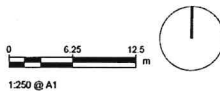
PROJECT MANAGEMENT INITIALS

R. KHAW	R. HIPOLITO	B. NEWELL
DESIGNER	CHECKED	APPROVED

ISSUE/REVISION

VR	DATE	DESCRIPTION
C	13.02.19	FOR APPROVAL
B	30.01.19	FOR APPROVAL
A	21.12.18	FOR REVIEW

KEY PLAN



PROJECT NUMBER
 60538574

SHEET TITLE
 PLANTING PLAN
 SHEET 6 OF 6

SHEET NUMBER
 DA-0000-L-0405